

► **GAS ANALYSER**

OXYBABY 6.0



Made in Germany

Product of



Cordless hand held oxygen or combined oxygen and carbon dioxide analyser for checking modified atmospheres in food packs. The ideal instrument for portable, faster and accurate sample tests at the packaging machine, in stores or in laboratories.

OXYBABY® a cost effective mobile alternative to tabletop / fixed analysers for welding and food technology.

It offers all benefits of modern technology quickly and easily by option. For example: Bluetooth for wireless communication.

Ensure that the quality of packaged product is maintained (HACCP), guaranteed continued customer satisfaction.

The ideal instrument for sample tests with a minimum sample gas requirement, allowing the smallest of modified atmosphere packages (MAP) to be tested.

Information of internal pressure in the package via pressure indication.

Together with the exclusive OBCC-Software the measured results can be documented providing complete traceability (HACCP). Provide your customer with the results ensuring that your product has the best possible pack quality.



further information on
www.oxybaby.com

► Video

Benefits

- minimum sample gas requirement for smallest packs
- integrated data log of the last 500 measurements
- product administration up to 25 users, 100 product names and 50 packaging lines
- increased memory capacity and simplified data export of measurement results by microSD card
- alternatively a pressure indication can be selected
- cordless operation using rechargeable batteries
- data transfer and charge of batteries via USB port
- sample flow control with warning in case of blocked needle
- upgraded simple one hand operation
- measurement alternatively also by hose
- easy to clean
- large illuminated graphic display
- multilingual menu guide
- integrated needle cover to protect the needle and user
- long lifetime of O₂ sensor (approx. 2 years, depending on use)
- low maintenance costs

Complete in carrying case

- charging device, microSD card
- OBCC software (demo version) for downloading
- 15 spare needles
- 5 spare filters
- set of 100 rubber seals
- case dimensions (HxWxD): approx. 325x385x115 mm (12.79x15.16x4.53 inches), case weight: approx. 1.7 kg

Options

- hose with Luer-Lok connection for stationary measurement
- data cable
- Bluetooth (e.g. for separate printer)

Please note our variety of accessories on the following pages

Skills of OXYBABY® 6.0

(compared to OXYBABY® M+) :

- ✓ minimal sample gas requirement (from 2ml up)
- ✓ complex administration
- ✓ five times larger data log
- ✓ data export and analysis software
- ✓ smart handling with key panel and display ,pro'
- ✓ Bluetooth by option

OXYBABY® 6.0 O₂
 OXYBABY® 6.0 O₂/CO₂

•	Gases	O ₂ balance gas: N ₂ , (Ar or others on request) O ₂ and/or CO ₂ balance gas: N ₂ , (Ar or others on request)
•	• Measuring principle O₂	electrochemical cell
•	• Measuring principle CO₂	IR-absorption
•	• Sensor lifetime O₂	approx. 2 years (in air at 20 °C / 68 °F)
•	• Sensor lifetime CO₂	long lifetime
•	• Measuring range	0–100%
•	•	O ₂ in 0.01%-steps
•	•	CO ₂ in 0.1%-steps
•	• Sample gas requirement	O ₂ < 2 ml O ₂ /CO ₂ < 6 ml
•	• Sample time	max. 6 sec. max. 10 sec.
•	• Calibration	simple two point calibration
•	• Sampling	automatic via needle using integrated pump
•	• Data log	last 500 measurements interface for transfer of logged data assignment of measurements to different product names
•	• Communication	USB port, microSD card
•	• Software	OBCC
•	• Multilingual	German, English, French, Italian, Dutch, Swedish, Finnish, Spanish, Polish, Russian, Turkish and Hungarian (more to follow)
•	• Temperature (gas/environment)	0 – 40 °C (32 – 104 °F)
•	• Display	backlit
•	• Shut down	automatic after 2 minutes of non-use
•	• Housing	shock resistant plastic
•	• Weight	approx. 580 g (without accessories)
•	• Dimensions (HxWxD)	187 x 106 x 91 mm (7.4 x 4.2 x 3.6 inch) (without needle)
•	• Power supply	3 integrated rechargeable batteries, type Ni-MH (charging device included)
•	• Charging device	110-240 V AC
•	• Approvals	Company certified according to ISO 9001 and ISO 22000 CE-marked according to: - EMC 2014/30/EU - Low Voltage Directive 2014/35/EU for food-grade gases according to: - Regulation (EC) No 1935/2004 Designed for Oxygen Service in accordance with EIGA 13/20 and CGA G-4.4: Oxygen Pipeline and Piping Systems Cleaned for Oxygen Service in accordance with EIGA 33/18 and CGA G-4.1: Cleaning of Equipment for Oxygen Service

Windows-Software for OXYBABY® 6.0, OXYBABY® P 6.0, OXYBABY® Med and PA 7.0.

OBCC is the ideal complement for your WITT-Gasanalyser - with modern surface, clearly structured and conveniently operable.

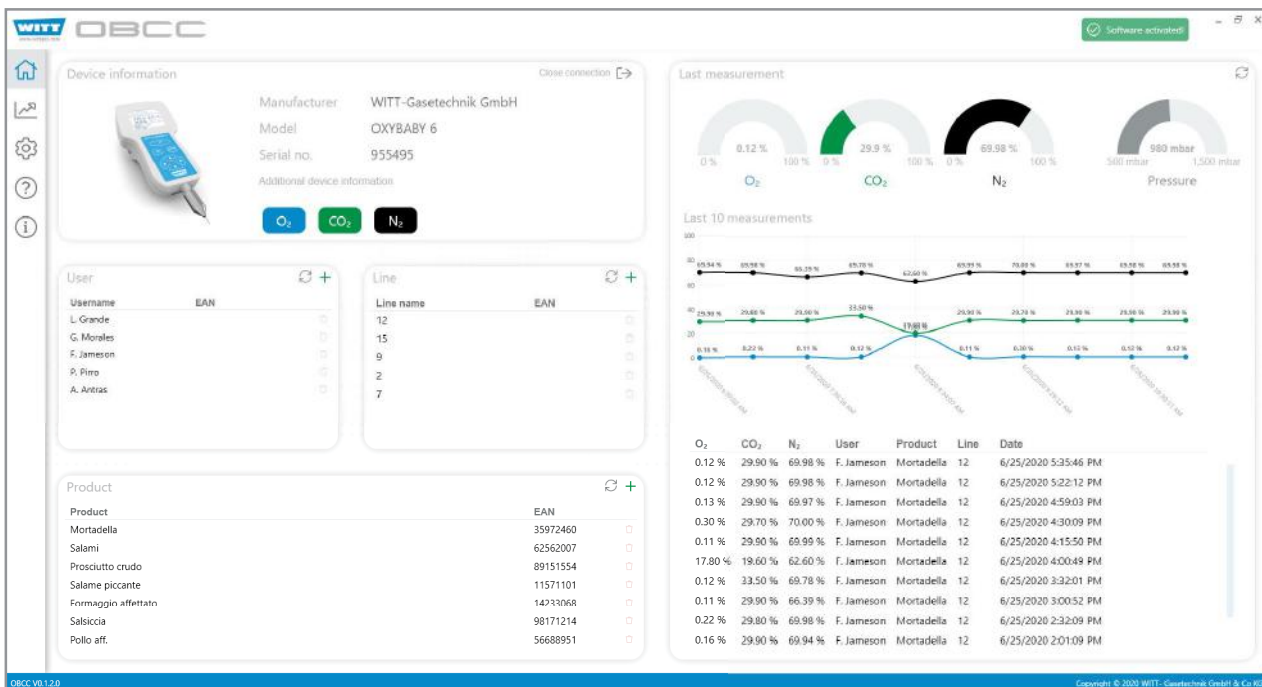
The application offers rapid graphical analysis of measured values. Simplify a system comprehensive data management and offers an uncomplicated export function for the complete digital storage.



Benefits

- modern, clearly structured user interface
- intuitive operation
- simple set up and administration of master data (products, user, packaging lines)
- quality control by means of data recording and storing with date and time
- the graphical presentation of measured values offers a fast overview
- knowledge by data analysis tool with filter options
- completely digital documentation by simple CSV export function
- 1 click generate PDF report for assurance of proof (in addition to the CSV export)
- time-saving by convenient data management and easy transfer of master data to new devices
- available menu languages: English, German, French, Italian, Spanish, Portuguese, Polish, Russian, Finnish, Swedish, Turkish, Romanian, Hungarian

30-day trial version with full function for download on www.wittgas.com



System requirements

Operating system

WINDOWS® 7 or above

Hardware

1 free USB interface, graphic resolution min. 1024 x 768 Pixel

OXYBABY® Table stand

This stable and sturdy table stand from stainless steel is ideal for use OXYBABY® as table top version.

Connector tube with Luer-Lok-connection is available for connection with OXYBABY®.

The height-adjustable table stand has a magnetic holder for easy handling and one deposit for a needle.

It is suitable for all OXYBABY® models and also usable as support.



Bluetooth table printer

Select Bluetooth equipment for your OXYBABY® 6.0 and print wireless directly on-site your results of measurement via small and handy table printer.

Practical, quick and easily.



Other models, options and accessories available upon request.

OXYBABY® Can-Piercer

The OXYBABY® Can-Piercer is essential for head space analysis of bottles and cans.

Safe interlocking and easy handling guarantees optimal quality controls also for bottles and cans with metal or plastic caps.

The Can-Piercer can be adjusted up to 390 mm maximum bottles - or cans height. The integrated needle protection and robust needles prevents needle breakage.

Material: steel

Weight: 7,5 kg (without OXYBABY®)

Dimensions (HxWxD): 585 x 155 x 235 mm (packed, without OXYBABY®)

Suitable for OXYBABY® M+ and OXYBABY® 6.0.



OXYBABY® Aquacheck

OXYBABY® Aquacheck is ideal for mini packages lower 2 ml sample gas volume.

The gas volume from two or more packages is collected in the water and analysable by the OXYBABY®.

Material: stainless steel

The OXYBABY® Aquacheck is available with and without water container.

Suitable for OXYBABY® M+ and OXYBABY® 6.0.

Other models, options and accessories available upon request.

Can-Piercer: Application in practice

Order-No.	Needle length in mm	Hight of bottles, cans	Bottle holder	Overpressure	Pressure regulator w. ball valve and gauge 0.1 - 0.7 bar	Calibration module + flow regulator *	Gauge 0 - 6 bar	Conversion possible	Application	Device
590000156	5.5 mm	270 mm		x <1 bar(g)				x	beverage cans (without gas / without overpressure), eg. juice	OXYBABY®
590000165	8.5 mm	270 mm	x	x >1 bar(g)				x	bottles, bevarage cans (with gas / with overpressure), eg. Cola, mineral water	OXYBABY®
590000166	8.5 mm	390 mm	x	x >1 bar(g)				x	bottles, beverage cans (with gas / with overpressure), eg. Cola, mineral water	OXYBABY®
590000325	18.5 mm	390 mm	x	x >1 bar(g)				x	bottles, beverage cans (with gas / with overpressure), eg. Cola, mineral water	OXYBABY®
590000341	5.5 mm	390 mm	x	0 - 4 bar				x x	bottles, beverage cans	no OXYBABY® connection, only pressure measurement

*to prevent the OXYBABY® from damage by too high overpressure, too high flow rate, the calibration module has to be connected between calibration gas / zero gas and OXYBABY®.

To obtain clear results we adjust a pressure of 0.5 bar and a flow rate of approx. 100 ml/min.

Attention:

The correct model of the required Can-Piercer type is dependent on

- the kind of liquid to be analysed,
- the available overpressure in the bottles / cans,
- the volume of the available headspace of the bottles / cans,
- the thickness of the caps / can walls

Our recommendations:

Case	Application	Example	Recommendation
1	for beverages containing gas	cola, mineral water, lemonades, beer, etc.	590000165, 590000166 or 590000325
2	for beverages, free of gas	juices, wine, water mixtures, etc.	590000156
3	for sole pressure measurement	from a can or bottle	590000341

Retrofit components and spare parts:

Bottle holder	956721800
Tubular extension for CAN-Piercer	802128600
Can-Piercer holder (needle 18.5 mm)	956864800
Can-Piercer holder (needle 8.5 mm)	956722000
Can-Piercer holder (needle 5.5 mm)	956674900
Can-Piercer holder (pressure measurement)	956883600
Needle connection with filter and RV	956721700
Hose	800707500
Luer-Lock connection female	800420800

Middle East

Regus Nassima Tower, 4th & 5th Floor Sheikh Zayed
Road, Trade Centre District Dubai, UAE 124303

Phone: +971 4311 6197



Gas Control Equipment

- Gas Mixing Systems
- Gas Metering Systems
- Gas Analysers
- Gas Pressure Vessels
- Engineering Of Customised Systems

Asia Pacific

Level 16, The Pavilion Tower, Jalan Raja Chulan,
50200, Kuala Lumpur, Malaysia

Phone: +603 2182 9754-5

Fax: +603-2182 9797



Gas Safety Equipment

- Flashback Arrestors
- Non-return Valves
- Quick Couplings
- Safety Valves
- Stainless Steel Devices
- Gas Filters
- Pressure Regulators
- Lance Holders
- Ball Valves
- Automatic Hose Reels
- Test Equipment
- Accessories
- Customised Safety Devices

Europe

Florianstr. 15-21, 44139 Dortmund, Germany

Int'l: +1(213) 457 - 3147

Tel: +49 2302 663 4646

Tel: +49 231 292 96 5056



M.A.P Equipment

- Gas Mixing Systems
- Gas Analyzers
- Leak Detection Systems
- Modified Atmosphere Packaging Solution

letstalk@vivangas.com

www.vivangas.com